

ABERDARE
COMMUNITY
SCHOOL



LEARNING PATHWAY
YEAR 12
CHOICES 2015

*A guide to subjects available to pupils entering Year 12 in
September 2015.*



CONTENTS

Subject	Pages
Art & Design	4
Biology	5
Business	6-7
Chemistry	8-9
Computing	10
Construction	11
D&T	12
Eng Literature	13-14
Engineering	15-16
English Lang/Lit	17
French	18
Geography	19
ICT	20
Media Studies	21
Music Tech/ Music	22-23
Performing Arts	24
Physics	25-26
Physical Education	27
BTEC Applied Science	28
Textiles	29
Hospitality	30
Health and Social Care	31-32
History	33
Law	34-35
Maths	36
Further Maths	37
Public Services	38
Religious Studies	39
Sport Studies	40
Leisure and Tourism	41
Welsh Baccaulaureatte	42-44
Sixth Form Entry Protocol	45-46
Year 12 Option Sheet	47
Year 13 Option Sheet	48



Aberdare Community School

Strive, Believe, Achieve

Choosing the Right Course for You

Course Outline

Before choosing a course, read the information below to ensure you reach the right decision.

Every course you choose at CVC has a level. This level indicates the type of course and minimum entry requirements you need to start that course.

Using your actual or predicted GCSE/BTEC, or other relevant qualifications, read the level descriptors to decide which level of course is suited to your needs.

Entry requirements for all subjects will generally require a specific grade at GCSE (or equivalent level) to have been achieved, (see Sixth form entry protocol for further details).

GCSE D-G Equivalent Level 1	GCSE A* - C Equivalent Level 2	A Level A – E Equivalent Level 3
These courses provide a basic introduction to a subject. To start a Level 1 course you need a minimum of 2 F-G grades at GCSE, ideally including Mathematics and English.	These courses provide a good overall knowledge of a subject area. For many subjects this is the minimum qualification required to work in a particular industry. To start a Level 2 course you will need a minimum of 4 GCSEs (or equivalent) at grade 'D' (ideally including Mathematics and English).	These courses provide a thorough knowledge of a subject area and are the same level as A Level. Successfully completing Level 3 courses such as A Levels or BTEC can provide access to university. To start a Level 3 course you will need a minimum of 4 GCSEs at grades A* - C (usually including Mathematics and English).



Aberdare Community School

Strive, Believe, Achieve

Host School:	Aberdare Community School / Also available in CVC
Subject Name:	Art and Design
Level:	AS/ A2
Syllabus:	WJEC
Duration of Course:	1/2 years
Time:	8 hours per fortnight

Course Outline

AS follows one unit of work, ART1 plus an externally set exam, ART2.

A2 follows one unit of work, ART3 plus an externally set exam, ART4.

Entry Requirements

Grade C and above. The course is demanding and rigorous and students need to demonstrate both commitment and enthusiasm.



What will I Study?

AS and A2 offer you the chance to investigate and experiment with different media and techniques. Exploring the work of both national and international artists and designers will open up new concepts and ideas and enhance and define your own independent studies and further develop your areas of interest.

How will I be Assessed?

AS and A2 are internally moderated and externally assessed.

AS Level

AS/ART1 coursework portfolio 25%

ART2 controlled assignment 25%

A2 Level

ART3 coursework portfolio 25%

ART4 controlled assignment 25%

Career Opportunity and Progression

Can lead to Foundation Studies, which in turn gives access to BA courses in different areas of Art and Design. For possible careers see prospectus.ac.uk (the UK's official graduate careers website).



Aberdare Community School

Strive, Believe, Achieve

Host School:	Aberdare Community School / Also available in CVC
Subject Name:	Biology
Level:	AS/ A2
Syllabus:	WJEC
Duration of Course:	1/2 years
Time:	8 hours per fortnight

Course Outline

Biochemistry, Cell Organisation, Biodiversity, Physiology of Body Systems, Energy, Homeostasis, The Environment, Variation, Inheritance and Option Choices.

Entry Requirements

C+ in Biology GCSE (Higher Tier)

What will I Study?

The course includes a wide variety of topics designed to improve your opportunities for securing a job in a variety of careers. Students wishing to study Medicine, Pharmacy and Healthcare may benefit from this course. Practical work and dissertation also play a large part in this course.

Unit 1 – Biochemistry and Cell Organisation

Unit 2 – Biodiversity and Physiology of Body Systems

Unit 3 – Energy, Homeostasis and Time Environment

Unit 4 – Variation, Inheritance and Option Choices

Unit 5 – Examination

How will I be Assessed?

2 Modules at AS, 3 Modules at A2 (one of which is a practical assessment).

Career Opportunity and Progression

Opportunities in Medical and Veterinary Sciences, Biotechnology, Biochemistry, Teaching and Pharmacy, Dentistry, Marine Sciences, Physiotherapy and Nursing, Food Sciences, Forestry, Psychology, Occupational Therapy, Forensic Science, Research Scientist, Teacher, Microbiologist.



Aberdare Community School

Strive, Believe, Achieve

Host School:	Aberdare Community School/St John Baptist
Subject Name:	Applied Business Studies
Level:	3: AS and A2
Syllabus:	EDEXCEL
Duration of Course:	1/2 years
Time:	8 hours per fortnight

Course Outline

This course is designed for students who have an interest in exploring the world of business in a practical way. You will have a chance to:

- * Develop an understanding of how business works in the real world
- * Discover the problems and opportunities faced by local and national business
- * Learn about how business functions such as marketing, finance, human and physical resources work together as part of a whole business.

Entry Requirements

5 GCSEs – C grade and above preferred.

What will I Study?

Year 12 AS units covered:
Investigating people at work
Investigating Business
Investigating Marketing

Year 13 A2 units covered:
Business Development
Managing and Developing People
Marketing Decisions/International Dimensions



How will I be Assessed?

Each year, two of the units will be assessed internally through the production of reports on extended topics i.e. coursework. These are marked by the class teacher and then sent to an external moderator at the end of the course. This is generally April/May. The third unit is externally assessed by a 1 ½ hour written paper that may be taken in January. In Year 12 this is Investigation People at Work and in Year 13, Marketing Decisions/Business Development.

Career Opportunity and Progression

Career opportunities include Administration, Finance, Marketing, Human Resources or Service Related Business. The course suits candidates who intend pursuing

careers in the fields of Economics/Business (Banking, Accounting, Management and Business) or as part of a general education course. It is also a good preparation for studying Business/Marketing in Higher Education up to Degree Level, gaining



Aberdare Community School

Strive, Believe, Achieve

Host School:	Aberdare Community School/Mountain Ash Comprehensive
Subject Name:	BTEC Business Studies
Level:	3: Subsidiary Diploma in Business
Syllabus:	EDEXCEL
Duration of Course:	1/2 years
Time:	8 hours per fortnight

Course Outline

Mandatory Units:

The Business Environment
Business Resources
Introduction to Marketing
Business Communication.

Optional Units in:

Accounting
Marketing
Human Resources
Management
Law
Administration and Retail.

Entry Requirements

GCSE Grade C or above preferred.

How will I be Assessed?

This is by way of written, assignment based work where each pupil is required to complete units of work equivalent to 60 credits over a two year period equivalent to one A Level.

Career Opportunity and Progression

Career opportunities include Administration, Finance, Marketing, Human Resources or Service Related Business. The course suits candidates who intend pursuing careers in the fields of Economics/Business Studies (Banking, Accountancy, Management and Business) or as part of a general education course.



Aberdare Community School

Strive, Believe, Achieve

Host School:	Aberdare Community School / Also available in CVC
Subject Name:	Chemistry
Level:	AS/ A2
Syllabus:	WJEC
Duration of Course:	1/2 years
Time:	8 hours per fortnight

Course Outline

Summary of Assessment

This specification is divided into a total of 5 units, 2 AS units and 3 A2 units. Weightings noted below are expressed in terms of the full A level qualification.

AS (2 Units)

AS Unit 1

The Language of Chemistry, Structure of Matter and Simple Reactions

Written examination: 1 hour 30 minutes

20% of qualification

AS Unit 2

Energy, Rate and Chemistry of Carbon Compounds

Written examination: 1 hour 30 minutes

20% of qualification

A Level (the above plus a further 3 units)

A2 Unit 3

Physical and Inorganic Chemistry

Written examination: 1 hour 45 minutes

25% of qualification

A2 Unit 4

Organic Chemistry and Analysis

Written examination: 1 hour 45 minutes

25% of qualification

A2 Unit 5

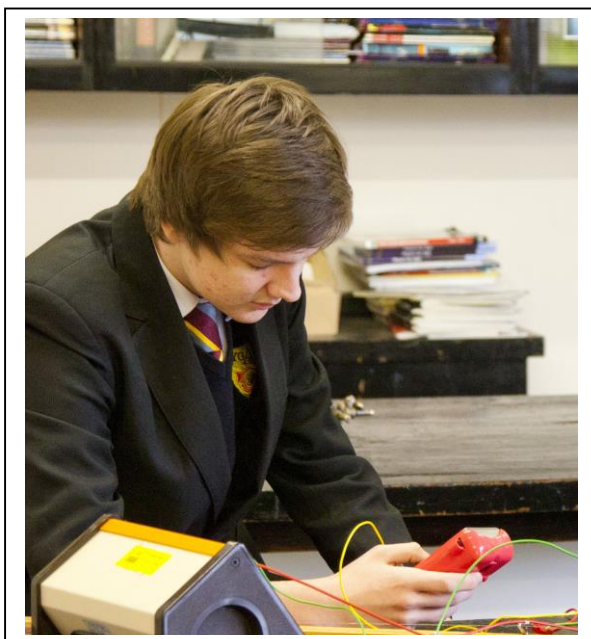
Practical Examination

10% of



Career Opportunity and Progression

Every material that you come across involves the work of chemists. Medical and dental courses insist on a good pass at A level Chemistry for acceptance. Chemistry sits centrally within the sciences and this course provides overlap with other A Levels, particularly Biology and Physics. The wide range of careers includes Engineering, Medicine, Dentistry, Biochemistry, Forensic Science, Geology and Teaching. Skills learned are important for jobs in Banking, Finance, Civil Service, Police and Armed Forces.





Aberdare Community School

Strive, Believe, Achieve

Host School:	Aberdare Community School / Also available in CVC
Subject Name:	Computing
Level:	AS/A2
Syllabus:	WJEC
Duration of course:	1/2 years
Time:	8 hours per fortnight

Course Outline

This specification encourages candidates to develop a broad range of skills and knowledge of computing as a basis for progression into further learning, including progression from AS to A2 and/or employment in computing-related fields.

Entry Requirements

GCSE grade C or above in ICT or relevant subject at Level 2.

What will I Study?

This specification is divided into a total of 4 units, 2 AS units and 2 A2 units.

How will I be Assessed?

AS (2 units)

CG1 Computing Theory paper AS

CG2 Internal Extended Assessment Task

A2 (2 units)

CG3 Computing Theory paper A2

CG4 Internal Extended Assessment Task A2

Career Opportunity and Progression

Computers are now widely used in all aspects of government, business, industry, education, leisure and the home. It is recognised that Computing has a great deal to offer. It integrates well with subjects across the curriculum. It demands both logical discipline and imaginative creativity in the selection and design of algorithms and the writing, testing and debugging of programmes; it relies on an understanding of the rules of language at a simple level; it encourages an awareness of computer systems; it extends the students' horizons beyond the school or college environment in the appreciation of the effects of computer applications on society and individuals.



Aberdare Community School

Strive, Believe, Achieve

Host School:	Aberdare Community School / Also available in CVC
Subject Name:	Construction
Level:	BTEC Level 2 Cert/Extended Cert
Syllabus:	EDEXCEL
Duration of course:	1 year
Time:	8 hours per fortnight

Course Outline

The course is made up of 3 or 6 units: 2 core units and 1 or 4 specialist units. The specialist unit enables you to study a particular area in more depth.

Entry Requirements

Pass at GCSE or equivalent in a relevant subject.

What will I Study?

All students will follow:

- Structure of the Construction Industry
- Exploring Health, Safety and Welfare in Construction
- Exploring Carpentry and Joinery
- Exploring Trowel Operations
- Exploring Painting and Decorating
- Exploring Methods and Techniques for low rise domestic buildings.

How will I be Assessed?

Standards are designed to take into account the vocational nature of the course. All units are assessed and graded and an overall grade for the qualification is awarded.

Career Opportunity and Progression

Students may progress in the construction industry including: Architectural design, surveying, carpentry or joinery, brickwork, site technician or painting and decorating. A BTEC extended certificate in construction prepares you for employment and provides a good grounding for more advanced courses.



Aberdare Community School

Strive, Believe, Achieve

Host School:	Aberdare Community School / Also available in CVC
Subject Name:	D&T - Product Design
Level:	AS/A2
Syllabus:	WJEC
Duration of course:	1/2 years
Time:	8 hours per fortnight

Course Outline

You will develop the understanding and knowledge required to design, develop, model, construct and evaluate a range of products from given design briefs and self researched areas. Manufacturing will include modern and traditional methods including use of a 3D printer and laser cutter.

Entry Requirements

5 GCSEs at C grade and above. A C grade or better, or a merit or better, in a related GCSE Design & Technology focus area would also be required.

What will I Study?

You will study a range of materials, product analysis, presentation techniques, CAD/CAM and problem solving strategies. You are encouraged to develop making skills in a range of materials and to develop confidence in the use of machinery and processes. A series of focused coursework make projects and opportunities to develop confidence in the use of CAD/CAM. Half of the lessons are dedicated to the theory element, where extended written answers will be produced in preparation for the examination.

How will I be Assessed?

AS DT1 (40%): a written examination (2hr) testing the breadth and depth of knowledge in Product Design.

AS DT2 (60%): a major design and make based project working from a design folio and sketchbook. Project themes are generated by students in discussion with staff.

A2 DT3 (40%): a written examination (2.5hrs) examining breadth and depth of knowledge in Product Design.

A2 DT4 (60%): a major design and make based project working from a design folio and sketchbook. Project themes are examination board prescribed.

Career Opportunity and Progression

The course develops skills which are appropriate to a very wide range of careers. These include design-based careers – product design, graphic design, interior design and engineering based careers – automotive engineering, civil engineering, architecture, surveying and teaching.



Aberdare Community School

Strive, Believe, Achieve

Host School:	Aberdare Community School / Also available in CVC
Subject Name:	English Literature
Level:	3 – A/S and A/2
Syllabus:	WJEC
Duration of Course:	2 Years
Time:	8 hours per fortnight

5 Modules:

2AS – Unit 1, Unit 2

3A2 – Unit 3 Unit 4, Unit 5

Entry Requirements

C+ grade and above at GCSE level in English Language or English Literature.

What will I Study?

AS: Unit 1: Prose and Drama. 2 hour examination

Prose fiction pre-1900. One question in two parts, based on the reading of one prose text from a prescribed list.

Drama. One question based on the reading of one play from a prescribed list.

AS: Unit 2: Poetry – Post 1900. 2 hour examination

One question requiring critical analysis of one poem from the prescribed list of poetry texts for this unit. One question requiring comparison of two poetry texts from the prescribed list for this unit.

A2: Unit 3: Poetry Pre 1900 and Unseen Poetry. 2 hour examination

One question in two parts, based on the reading of one poetry text from a prescribed list. One question requiring comparative analysis of two unseen poems.

A2: Unit 4: Shakespeare. 2 hour examination

One question based on an extract from one Shakespeare play from the prescribed list for this unit. One essay question based on the reading of one Shakespeare play from the prescribed list.

A2: Unit 5: Prose Study. Internally assessed coursework

One 2500-3500 word assignment based on the reading of two prose texts from different periods, one pre-2000 and one post-2000, nominated by the centre.

How will I be Assessed?

Assessment is via a mixture of external exams (80%) and internally assessed coursework (20%). All four exams are 2 hours long with AS assessment in June of Year 12 and A2 assessment in January and June of Year 13.

Career Opportunity and Progression

English Literature is always an acceptable subject for all arts, humanities and social sciences courses at university. Many jobs also find this course acceptable too, as it is a subject that required high analytical skill and a command of good writing skills. Career opportunities include teaching, broadcasting, journalism and publishing.



Aberdare Community School

Strive, Believe, Achieve

Host School:	Aberdare Community School
Subject Name:	Engineering
Level:	BTEC Level 2 First Extended Certificate in Engineering
Syllabus:	Pearson
Duration of Course:	1/2 years
Time:	8 hours per fortnight

Course Outline

BTEC Engineering contains 10 units, two of which are externally assessed. The units enable the pupil to gain an understanding of a wide range of different types of engineering and how they are applied within the real world.

Entry Requirements

An interest in Engineering and Industry. A good level of knowledge in ICT, Science, Mathematics and English would be beneficial and will be utilised throughout the different units.

What will I Study?

The units cover a large area of engineering from Health and safety, machining techniques to mathematics and product assembly. These include Engineering World, Investigating an engineered product, Health and Safety in Engineering, Interpreting and Using Engineering Information, Computer-aided Engineering, Mathematics for Engineering, Machining Techniques, Engineering Materials, Welding and Bicycle Maintenance

How will I be Assessed?

The external assessments are designed to be appropriate for the sector, reflecting the skills and aptitudes required for each profession. After you have completed each unit you will be provided with feedback from your teacher. At the end of the course you will gain a Pass, Merit, Distinction or Distinction*.

Career Opportunity and Progression

The good news is that whatever your interests at school, there is a branch of engineering that will match your desires and interests. With the large area of subjects engineering covers you are most likely to widen your options later in life rather than narrow them. You can develop your knowledge further at Level 3 Engineering or even Design Technology. Taking up an industry apprenticeship straight from school carries the advantage that you earn a salary from day one. This would be while you are training, as you could start straight after completing Level 2 or 3 depending on the employer.



Aberdare Community School

Strive, Believe, Achieve

Host School:	Aberdare Community School
Subject Name:	Engineering
Level:	BTEC Level 3 Subsidiary Diploma
Syllabus:	EDEXCEL
Duration of Course:	2 years
Time:	8 hours per fortnight

Course Outline

The BTEC National Engineering is a six unit award which is designed to enable students to gain an understanding of the Key Engineering pathways and the application of engineering principles.

Entry Requirements

Pass at GCSE or equivalent in a relevant subject.

What will I Study?

Communications for Technicians
Science for Technicians
Electronics
Engineering Drawing
Computer Aided Design
Health, Safety and Welfare

How will I be Assessed?

Standards are designed to take into account the vocational nature of this course. All of the work is internally verified, some will be sampled by external verifiers.

Career Opportunity and Progression

A number of pathways are available in Engineering, such as engineering production/manufacture electrical and electronic engineering, vehicle engineering and engineering services. Successful completion of all of the units is essential to the successful award of the BTEC Subsidiary Diploma.



Aberdare Community School

Strive, Believe, Achieve

Host School:	Aberdare Community School
Subject Name:	English Language and English Literature
Level:	AS/A2
Syllabus:	WJEC
Duration of Course:	2 years
Time:	8 hours per fortnight

Course Outline

4 modules
2 AS: LL1 and LL2
2 A2: LL3 and LL4

Entry Requirements

C+ grade and above at GCSE level in English Language or English Literature.

What will I Study?

AS: LL1 2.5 hour examination

Section a: Poetry and Prose based study – Poetry anthology plus unseen texts study and section b: ‘The Timetravellers Wife’ – Niffenegger and ‘The Time Machine’ – Wells.

AS: LL2 Internally Assessed Coursework

Creative and transactional writing plus evaluation commentary.

AS: LL3 Internally Assessed Coursework

Shakespeare’s play e.g. King Lear, plus other drama text e.g. Death of a Salesman – Arthur Miller; then writing two drama texts for performance plus commentary.

A2: LL4 2.5 hour examination

Section a: Unseen text analysis and section b: The Granta Book of Reportage analysis.

How will I be Assessed?

Assessment is via a mixture of external exams (60%) and internally assessed coursework (40%). Both exams are 2.5 hours long with AS assessment in June of Year 12 and A2 assessment in January and June of Year 13.

Career Opportunity and Progression

English Literature is always an acceptable subject for all arts, humanities and social sciences courses at university. Many jobs also find this course acceptable too, as it is a subject that required high analytical skill and a command of good writing skills. Career opportunities include teaching, broadcasting, journalism and publishing.



Aberdare Community School

Strive, Believe, Achieve

Host School:	Aberdare Community School
Subject Name:	French
Level:	AS/A2
Syllabus:	WJEC
Duration of Course:	1/2 years
Time:	8 hours per fortnight

Course Outline

The course provides students with a good skills-based knowledge of both the French language and the society and culture of the French speaking world. Students build upon the four skill areas of speaking, listening, reading and writing as studied at GCSE.

Entry Requirements

B+ in French GCSE preferred.

What will I Study?

The course is topic-based. You will study Leisure and Lifestyles and The Individual and Society at AS Level. The A2 topics include environmental, social and political issues. The A2 course also includes a guided studies options where students will study, in depth, a French book or film and a region of France. You may have the opportunity to practice your language skills on a visit to France and will also have the support of a French Language Assistant in supplementary individual conversation lessons.

How will I be Assessed?

AS: FN1 Oral Examinations (20%), FN2 Reading, Listening and Writing (30%)
A2: FN3 Oral Examination (20%), FN4 Reading, Listening and Writing (30%)

Career Opportunity and Progression

The course prepares you for further education or your future career by giving a transferable and highly sought after skill. A wide range of careers need or prefer people who can offer a language. Linguistics are always required in Education, Law, Accountancy, Journalism, the Retail Industry, Import/Export, Engineering, The Travel Industry, Sales and Marketing. Indeed language university graduates have one of the lowest rates of unemployment.



Aberdare Community School

Strive, Believe, Achieve

Host School:	Aberdare Community School
Subject Name:	Geography
Level:	AS/A2
Syllabus:	WJEC
Duration of Course:	1/2 years
Time:	8 hours per fortnight

Course Outline

The course encourages you to understand your own limits in a global world. Focuses upon the earth as a dynamic place where physical, environmental and human process and changes interact to produce a constantly changing world. Enables students to become responsible, knowledgeable and skilful citizens. Students will develop their own attitudes and values based upon complex issues facing society.

Entry Requirements

C in Geography/minimum 5 A* - C including Mathematics.

What will I Study?

G1 – Changing Physical Environment
Investigating climate change
Investigating tectonic and hydrological change

G2 – Changing Human Environment
Investigating population change
Investigating settlement change

G3 – Contemporary Themes and Research in Geography
One examination of 2 hr 15 mins
a. Contemporary Themes, Landforms and their management, Globalisation
b. Individual research Enquiry

G4 – Sustainability. One examination 1 hr 45 mins.

How will I be Assessed?

At the end of Year 12 students will sit 2 examinations based on the 2 units of work in the specification. Each examination has equal weighting. An AS grade will be awarded based on the performance of the candidate. At the end of Year 13 students will be awarded an A level grade based on performance in all 4 units.

Career Opportunity and Progression

Where do all the Geographers go?
Professional and social services (teaching, police, law), leisure and tourism (travel agent, air traffic control, sports management), business and finance, information services.



Aberdare Community School

Strive, Believe, Achieve

Host School:	Aberdare Community School
Subject Name:	ICT
Level:	Level 3
Syllabus:	EDEXCEL
Duration of Course:	1/2 years
Time:	8 hours per fortnight

Course Outline

The A Level is designed in two parts. The first year will allow an AS to be gained or 50% of the A2 award. You can continue on to the A2 in Year 13.

The first year consists of a practical controlled test, one examination and one piece of work.

Entry Requirements

The minimum requirements will normally be a grade C at full course or short course GCSE in ICT.

What will I Study?

The implementation of computer systems in a range of applications – including office applications and multimedia. An appreciation of the approach, body of principles, knowledge and skills that constitute ICT.

How will I be Assessed?

The course is assessed by one external practical test take in December/January and one piece of coursework to be completed by Easter and one examination in May/June.



Aberdare Community School

Strive, Believe, Achieve

Host School:	Aberdare Community School
Subject Name:	Media Studies
Level:	AS/A2
Syllabus:	WJEC
Duration of Course:	1/2 years
Time:	8 hours per fortnight

Course Outline

A Level Media Studies comprises of four modules taught over a two year period of study. Two modules are studied for AS in Year 12 and a further two modules for A2 in Year 13. Together the courses make up the complete qualification of A Level.

Entry Requirements

GCSE Grade C or above preferred in related subject.

What will I Study?

- MS1 Media Representations and Responses
- MS2 Media Production Processes
- MS3 Media Investigation and Production
- MS4 Media, Text, Industry and Audience

How will I be Assessed?

- MS1 Examination
- MS2 Coursework
- MS3 Coursework
- MS4 Examination

Career Opportunity and Progression

Many students take Media Studies at degree level in University. It can help you in a range of careers including publishing, the media, journalism and teaching.



Aberdare Community School

Strive, Believe, Achieve

Host School: Aberdare Community School also available in CVC
Subject Name: Music
Level: AS/A2
Syllabus: WJEC
Duration of Course: 1/2 years
Time: 8 hours per fortnight

Course Outline

AS Level: 3 components, Performing (Solo and Ensemble); Composing (Portfolio of 2 pieces – 1 must be linked to ‘Western Classical Tradition’) and Appraising (2 Part Listening Examination).

A Level: 3 Components, Performing, Composing and Appraising similar to AS Level except Composing (2nd Piece must be linked to C20th/21st) and Appraising (detailed study of 1 ‘set work’)

Entry Requirements

GCSE Music Grade C or above. Grade 4/5 on an appropriate instrument is desirable. Grade 4/5 theory alongside practical grade may be considered at GCSE equivalent.

What will I Study?

U1 & MU4	Performing
MU2 & MU5	Composing
MU3 & MU6	Appraising

How will I be Assessed?

MU1	15%	External Examiner’s Visit
MU2	15%	Teacher Marked and Externally Moderated
MU3	20%	Externally Marked
MU4	15%	External Examiner’s Visit
MU5	15%	Teacher Marked and Externally Moderated
MU6	15%	Externally Marked

The additional 5% is taken at MU4, 5 and 6 at the candidate’s discretion.

Career Opportunity and Progression

Music Degree at University or Music College, Intern in Music Press, HND (Music/Music Technology), Degree equivalent via armed forces music schools.

Instrumental Performer, Teacher, Singer, Armed Forces Musician, Composing music for TV & Film, Music Therapy, Careers in TV & Radio, Music Journalism, Working in the recording industry, music librarian, work in the theatre, Conducting, Instrumental repairs, ‘showbiz’ etc.



Aberdare Community School

Strive, Believe, Achieve

Host School:	Aberdare Community School /MACs
Subject Name:	Music Technology
Level:	BTEC National Certificate
Syllabus:	EDEXCEL
Duration of Course:	2 years
Time:	8 hours per fortnight

Course Outline

Certificate – AS Equivalent

The course is made up of one mandatory and two optional units.

Core Unit: Music Events Management

Optional Unit 1: Concert Production and Staging

Optional Unit 2: Music Project

Diploma – A2 Equivalent

The course is made up of one additional mandatory unit and two additional units.

Entry Requirements

The ability to sing or play an instrument and an interest in music technology and the music industry.

What will I Study?

In the core unit you will learn how to plan and manage a music event from start to finish taking on roles and allocating roles where appropriate.

In the first optional unit you will learn how to set up sound and lighting for a live production.

In the second optional unit you will learn how to plan, rehearse for and perform in a live rock concert.

How will I be Assessed?

Each task is assessed separately and can be re-submitted as many times as required. You are required to pass every task to achieve the qualification.

Career Opportunity and Progression

This course leads to further study at university or a career in the music industry.



Aberdare Community School

Strive, Believe, Achieve

Host School:	Aberdare Community School / MACs
Subject Name:	Performing Arts
Level:	Subsidiary Diploma
Syllabus:	EDEXCEL
Duration of Course:	1/2 years
Time:	8 hours per fortnight

Course Outline

You will explore and experience a range of theatrical genres, develop skills in preparation for a range of performance work, and perform in different venues with different target audiences, to fulfil the specification requirements.

Entry Requirements

C+ in 5 GCSE subjects would be preferred.

What will I Study?

The aims of the course are to produce a variety of scripted and devised work, considering the visual presentation, context and performance venue in which they have performed.

You will study:

2 Core Units:	Rehearsing and Performance Principles of Acting
4 Other Units:	Theatre in Education, Masks in Production, Voice 1 and Variety Performance

How will I be Assessed?

2 Core Units:	Internally assessed.
4 Other Units:	Externally and Internally Verified.

Career Opportunity and Progression

This course will develop work related skills in the Arts industry. It combines well with other subjects such as English, Media, Drama, Music and Art.



Aberdare Community School

Strive, Believe, Achieve

Host School:	Aberdare Community School
Subject Name:	Physics
Level:	AS/A2
Syllabus:	WJEC
Duration of Course:	1/2 years
Time:	8 hours per fortnight

Course Outline

The course:

Enables you to become confident citizens in an increasingly technological world.

Shows the importance of Physics as a human endeavour which interacts with social, philosophical, economic, industrial and environmental matters.

Prepares students for employment and/or further studies beyond AS or A level through the development of abilities, scientific skills and Key Skills useful in everyday life.

Entry Requirements

C+ in Physics GCSE (Higher Tier) or related Science qualification.

What will I Study?

At AS level:

PH1 Motion, Energy and Change

PH2 Waves and Particles

PH3 Practical Physics

At A2 level:

PH4 Oscillations and Fields

PH5 Electromagnets, Nuclei and Options

PH6 Experimental Physics



How will I be Assessed?

PH1, PH2, PH4 and PH5 will be set and assessed by the exam board. PH3 is a series of practical experiments which are conducted in the school laboratory but assessed by the board. PH6 comprises of a synoptic data analysis paper and a practical investigation task.

Career Opportunity and Progression

There are lots of exciting careers for Physics in the technological age we live in today. Many people with Physics degrees choose careers in Research, Medicine, Defence, Engineering, (Civil, Mechanical, Electrical), Telecommunications, Aerospace and Computing. There are also more unusual opportunities available to those with a Physics background, some choosing to become a Pilot, a Video Game Designer or a Fashion Technologist.



Aberdare Community School

Strive, Believe, Achieve

Host School:	Aberdare Community School
Subject Name:	Physical Education
Level:	AS/A2
Syllabus:	OCR
Duration of Course:	1/2 years
Time:	8 hours per fortnight

Course Outline

Year 12

You will study theory in relation to Anatomy and Physiology. You will also undertake a practical activity in which you can choose to Perform, Coach or Officiate.

Year 13

Comparative Studies
Exercise and Sport Physiology
Sports Psychology

Entry Requirements

GCSE Grade C or above.

What will I Study?

- Unit 1 AS An Introduction to Physical Education
- Unit 2 AS Acquiring, developing and evaluating practical skills in Physical Education
- Unit 3 A2 Principles and Concepts Across Different Areas of Physical Education.
Options within this are:
A2 – Socio-cultural Options – Comparative Studies
A2 – Scientific Options – Exercise and Sport Physiology
- Unit 4 A2 The Improvement of effective performance and the critical evaluation of practical activities in Physical Education in one sport.

How will I be Assessed?

Unit 1 is externally assessed through a 2 hour written paper.
Unit 2 is internally assessed throughout coursework.
Options in Unit 3 are externally assessed through a 2 ½ hour paper and Unit 4 is also internally assessed.

Career Opportunity and Progression

Any sports or health related vocation.

PE Teacher, Fireman, Police Force, Army, Sports Journalism, Physiotherapy, Sports Psychology, Sports Management, Sports Agent.



Aberdare Community School

Strive, Believe, Achieve

Host School:	Aberdare Community School
Subject Name:	Applied Science
Level:	BTEC Subsidiary Diploma
Syllabus:	EDEXCEL
Duration of Course:	1/2 years
Time:	8 hours per fortnight

Course Outline

This course offers a vocational qualification. It will focus on Applied Science and reflect aspects of employment within a science organisations or organisation that use science.

You will cover selected core modules of Applied Science in Year 12 and then choose to specialise in Forensic Science or Applied Biology in Year 12.

Entry Requirements

GCSE Grade C or above.

What will I Study?

Four core modules in Year 12.

In Year 13 modules covered will depend on which course is chosen (Forensic Science or Applied Biology).

How will I be Assessed?

25% Examination

75% Coursework

Career Opportunity and Progression

BTEC National earn you UCAS points and are therefore valued by universities, allowing you to go on and take a HND/HNC or honours degree.

Employers value BTEC Nationals highly because they prove that you:

Are prepared for the world of work.

Are committed to your chosen career.

Have robust practical and theoretical skills.



Aberdare Community School

Strive, Believe, Achieve

Host School:	Aberdare Community School
Subject Name:	Textiles
Level:	AS/A2
Syllabus:	WJEC
Duration of Course:	2 Years
Time:	8 hours per fortnight

Course Outline

During AS (year 1 of the course) you will be required to create a portfolio/sketchbook based on a personal theme or topic. You will then make an outcome/s based on that theme, for submission with your portfolio/sketchbook.

During A2 (year 2 of the course) you will be required to create an extended portfolio/sketchbook based on a personal theme or topic, which explores more textile techniques. You will again make an outcome/s based on that theme, for submission with the portfolio/sketchbook. You will also complete an externally set assignment during A2; creating a sketchbook/portfolio based on a chosen question set by the exam board. You will also undergo a 15 hour practical exam, whereby you will create the outcome that goes with the exam portfolio/sketchbook.

Entry Requirements

Desired C grade or above at GCSE, with an interest and enthusiasm for Textiles. The course is focused on textiles techniques and production, with an artistic element to the presentation of the work, therefore creativity is also a desirable quality.

What will I Study?

The course focuses on textiles techniques and production, exploring different decorative techniques and different fashion trends, including vintage and cultural wear. Experimentation of the different techniques will be undertaken during AS (year 1) in order to improve skills; the techniques include, silk painting, hand and machine embroidery, appliqué and many more. Throughout this course you will be asked to take inspiration from artists, fashion designers and your own experience in order to compile different research and media to base your sketchbook and outcome on.

How will I be Assessed?

AS and A2 are internally moderated and externally assessed.

AS – Component 1 (Personal creative enquiry) 100% of AS Level.

A2 – Component 1 (personal investigation) 60% of A Level. Component 2 (Externally set assignment) 40% of A Level.

Careers and Progression

Careers include: different avenues of fashion design, retail buyer, seamstress, textile design, industrial/product designer, print maker, secondary school teacher.

Progression: This course can lead to foundation and higher tier courses, including BA course in textiles design and retail management.



Aberdare Community School

Strive, Believe, Achieve

Host School:	Aberdare Community School
Subject Name:	Hospitality
Level:	BTEC Level 3 Subsidiary Diploma
Syllabus:	Edexcel
Duration of Course:	2 years
Time:	8 hours per fortnight

Course Outline

This course is designed to provide a highly specialist work-related qualification. It gives you the knowledge; understanding and skills that are needed to prepare for employment or provides a pathway to higher education or degree in a college or university. The course provides opportunities to develop your practical skills, a range of Key Skills and your capacity for imaginative, innovative thinking, creativity and independence.

Entry Requirements

The minimum requirements will normally be a C+ grade at GCSE level in a food related subject and an interest in the Hospitality Industry.

What will I Study?

The qualification is awarded based on 100% coursework and is studied throughout years 12 and 13. You will be required to complete six units in total, consisting of both theory and practical units. It should be noted that the practical units require you to provide your own ingredients for some of the assessments.

Units being studied include The Hospitality Industry, European Food, Planning and Managing a Hospitality Event, Asian Food, Advanced Skills and Techniques in Producing Desserts and Petits Fours.

How will I be Assessed?

All units are centre-assessed and externally verified. There are no examinations for this qualification. The full award and units from this qualification are graded as Pass, Merit or Distinction.

Career Opportunity and Progression

The course gives you the opportunity to develop life skills and gain valuable experience in an industry that employs over 2.4 million people in the UK. Thus offering a unique opportunity for you to climb the ladder in employment or obtain a part time job while studying at college or university. Jobs include chef, environmental health officer, trading standards officer, front of house, restaurant / hotel entrepreneur, dietician, travel and tourism, food technologist and catering teacher.



Aberdare Community School

Strive, Believe, Achieve

Host School:	Aberdare Community School
Subject Name:	Health and Social Care
Level:	AS/A2
Syllabus:	OCR
Time:	8 hours per fortnight

Course Outline

AS level consists of three units of study, two units being coursework based and one unit is an externally set exam. During AS you will focus on the needs of clients and the techniques and professional services aimed at meeting those needs. You will be assessed in the following key areas of study, while completing three different units of study:

- Rights, responsibilities and values
- Communication in care settings
- Health and well-being.

A2 level consists of three units of study, two units being coursework based and one unit is an externally set exam. During A2 you will develop AS content through addressing the factors affecting, and issues involved in, service delivery. You will be assessed in the following key areas of study, while completing another three units of study:

- Service provision and practitioner roles
- Understanding human behaviour and development
- Their ability to draw together aspects of these areas in a variety of contexts.

Entry Requirements

Desired C grade or above at GCSE, with either Health or Social care or Child Development. The course is demanding and will require commitment and dedication in order to be successful.

What will I Study?

The aim of this course is to help you develop and sustain an interest in health, early-years care and education, social care and issues affecting the care sector. It will help you acquire knowledge and understanding of health, early-years care and education and issues affecting the health and social care sector. It will allow you to develop skills that will enable you to make an effective contribution to the care sector including skills of research, evaluation and problem-solving in a work related context. It will allow you to apply knowledge, understanding and skills learnt during the course, while completing a placement in a care setting.

How will I be Assessed?

AS is broken down into three units of study:

Unit 1: Promoting quality care is an externally set exam unit, which consists of a six question paper. (33% of AS level).

Unit 2: Communication in care settings is an internally assessed unit, made up of coursework and a placement within a care setting. (33% of AS level).

Unit 3: Promoting good health is an internally assessed unit, made up of coursework and a promotional campaign. (33% of AS level).

A2 is broken down into three units of study:

Unit 1: Care practice and Provision is an internally assessed unit, made up of coursework. (16% of A Level).

Unit 2: Child Development is an internally assessed unit, made up of coursework and a working resource to support a child's development. (16% of A Level).

Unit 3: Understanding Human Behaviour and Development is an externally set exam unit, which consists of a six question paper. (16% of A level).

Careers and Progression

Careers include Childcare, Nursing, Paediatrics, Midwifery, Social work, Teaching/similar careers, Police Officer, Probation Officer/YOT, Medicine, Paramedics, Health visitor, Mental health, Counselling. This course can lead to foundation and higher tier courses in Health and Social Care, Psychology, Child Development, Midwifery and many more.



Aberdare Community School

Strive, Believe, Achieve

Host School:	Aberdare Community School / Also available in CVC
Subject Name:	History
Level:	3: AS/A2
Syllabus:	WJEC
Duration of Course:	2 Years
Time:	8 hours per fortnight

History A' Level topics for teaching beginning September 2015

There are **FIVE** units of study. **Two** units in Year 12 and **three** units in Year 13.

Unit 1 (AS) Period Study – Year 12

Politics, Protest and Reform in Wales and England c.1780 - 1880 (20%) of qualification. Written examination 1hr 45 mins. 60 marks

Unit 2 (AS) and Unit 4 (A2) In–Depth Study

German Democracy to Dictatorship c. 1918 – 45

Unit 2 (AS): Part 1, Weimar and its challenges c.1918 – 33 **Year 12**. Written examination 1hr 45 mins (20%) of qualification. 60 marks

Unit 4 (A2): Nazi Germany c.1933 – 45 **Year 13**. Written examination 1hr 45 mins (20%) of qualification. 60 marks

Unit 3 (A2) Breadth Study – Year 13

The American Century c. 1890 – 1990. Written examination 1 hr 45mins (20%) of qualification.
60 marks

Unit 5 (A2) Historical investigation (Coursework) – Year 13

Students investigate an issue of historical debate through a study of different historical interpretations. This study must be researched and completed independently at home. There is no timetabled lessons for this Unit. Students are required to manage their time accordingly in preparation and completion of this work. It is an independent and individual learning process.

Non – examined unit 3000 – 4000 words. (20%) of qualification. 60 marks



Aberdare Community School

Strive, Believe, Achieve

Host School:	Aberdare Community School
Subject Name:	Law
Level:	3: AS/A2
Syllabus:	WJEC
Duration of Course:	2 Years
Time:	8 hours per fortnight

Course Outline

The AS and A Level course involve detailed academic study. You will be prepared to enter examinations at AS level and at A level. Skills of analysing, applying and researching knowledge will be focused upon.

Entry Requirements

GCSEs of Grade C or above.

What will I Study?

AS – Unit 1

The sources that the law of England and Wales is drawn from Legal values such as Human Rights, Morality and the Rule of Law.

The criminal law processes in England and Wales.

The civil law processes in England and Wales.

Sources of funding that support bringing a legal case.

The legal bodies of the European Union.

AS – Unit 2

Sources of European Law

The legislative process

The structure of the courts and legal reasoning

Law reform

The professionals working in the legal structure

A2 – Unit 3

The creation of a contract

Freedom of contract and effect of statutes

The function of the Law of Contract – how it responds to changes in society.

A2 – Unit 4

Consumer Protection Legislation

Enforcement of Consumer Protection

Remedies for Consumers

Consumer Credit Legislation

How will I be Assessed?

All four units are assessed by examination.

AS Unit 1 – 1 hour 30 mins

AS Unit 2 – 1 hour 30 mins

AS Unit 3 – 1 hour 30 mins

AS Unit 4 – 2 hours 30 mins

Career Opportunity and Progression

The A level progression is a well established route into Higher Education.

Legal qualifications can lead to a wide range of careers such as the legal profession and posts in local government, the financial sector and business.



Aberdare Community School

Strive, Believe, Achieve

Host School:	Aberdare Community School / Also available in CVC
Subject Name:	Mathematics
Level:	3: AS/A2
Syllabus:	WJEC
Duration of Course:	1 Year/2
Time:	8 hours per fortnight St Johns – 9 hours per fortnight

Course Outline

6 Modules	3 A/S: C1, C2 and S1
	3 A/2: C3, C4 and M1

Entry Requirements

C grade at GCSE level essential (B+ preferred).

What will I Study?

The course consists of a mixture of Pure Mathematics and Applied Mathematics.

In Year 12 C1 and C2 are Pure Mathematics modules (algebra, geometry, calculus) and S1 is a Statistic module (probability). In Year 13, C3 and C4 are Pure Mathematics modules and M1 is a Mechanics module (force, velocity).

You will acquire knowledge and skills, experience mathematical activity, solve problems, apply mathematics in other disciplines, develop understanding of mathematical reasoning and provide a basis for further study.

How will I be Assessed?

Assessment is via external examinations. There are three examinations in Year 12, C1, C2 and S1 and three examinations in Year 13, C3, C4 and M1.

All module examinations are 1.5 hours long with A/S assessment in May of Year 12 and A/2 assessment in June of Year 13. Marks from all six modules contribute to the final grade.

Career Opportunity and Progression

Mathematics is an entry qualification for many other courses which lead to careers in Medicine, Science, Engineering, Astronomy, Law, Education, Finance, Statistics, Accounting and Banking.



Aberdare Community School

Strive, Believe, Achieve

Host School:	St John Baptist
Subject Name:	Further Mathematics
Level:	3: AS/A2
Syllabus:	WJEC
Duration of Course:	2 Years
Time:	9 hours per fortnight

Course Outline

6 modules – FP1, FP2, FP3, M2, M3 and S2

Entry Requirements

C+ grade at GCSE level essential (B+ preferred)

What will I Study?

The course consists of a mixture of Pure Mathematics and Applied Mathematics. In Year 12 C1, C2, C3 and C4 are Pure Mathematics modules (algebra, geometry, calculus) and S1 is a Statistics module (Probability)

In Year 13, FP1, FP2 and FP3 are Pure Mathematics modules and M1, M2 and M3 are Mechanics modules (force, velocity, differential equations) and S2 is a Statistics module.

You will acquire knowledge and skills, experience mathematical activity, solve problems, apply mathematics in other disciplines, develop understanding of mathematical reasoning and provide a basis for further study.

How will I be Assessed?

Assessment is via external examinations. There are five examinations in Year 12 and seven in Year 13. All module examinations are 1.5 hours long with assessment of C1 and C2 in January of Year 12 and C3, C4 and S1 in June of the first year. A2 assessment in January and June of Year 13 (FP1 and M1 in January and FP1, FP2, M2, S2 and M3 in June). Marks from all twelve modules contribute to the two final grades.

Career Opportunity and Progression

Mathematics is an entry qualification for many other courses which lead to careers in Medicine, Science, Engineering, Astronomy, Law, Education, Finance, Statistics, Accounting and Banking.



Aberdare Community School

Strive, Believe, Achieve

Host School:	Aberdare Community School
Subject Name:	Public Services
Level:	3: BTEC Subsidiary Diploma
Syllabus:	EDEXCEL
Duration of Course:	2 Years
Time:	8 hours per fortnight

Course Outline

This is a 2 year course. During the course you will have the opportunity to study a variety of the public services such as the army and the fire service. You will be able to meet and listen to guest speakers from the main public services to find out about careers in these fields.

Entry Requirements

Minimum of 5 GCSEs at Grade C or above.

What will I Study?

The course includes a wide variety of options designed to improve your opportunities for securing a job in the public services. Some of the options are theoretical whereas others are very practical in their nature. Optional courses include Government, Policies and the Public Services, Leadership and Teamwork in the Public Services; Physical Preparation, Health and Lifestyle for the Public Services.

How will I be Assessed?

Your work will be continuously assessed through a series of projects related to the public services. Grades of Pass, Merit and Distinction are awarded depending upon the quality of your portfolio.

Career Opportunity and Progression

Successful completion of this course is a direct entry to University to study either a HND or an Honours Degree in subjects related to a career in the public services. Alternatively you can progress to a career in the public services such as the Army, Police, Navy, Fire Services, Customs and Excise, Paramedics, Prison Service etc.



Aberdare Community School

Strive, Believe, Achieve

Host School:	Aberdare Community School
Subject Name:	Religious Studies
Level:	AS/A2
Syllabus:	WJEC
Duration of Course:	1/2 Years
Time:	8 hours per fortnight

Course Outline

AS: Philosophy of Religion and Buddhism.

A2: Philosophy of Religion, Synoptic Module: Religion and Human Experience

Entry Requirements

5 GCSEs – C grade and above preferred.

What will I Study?

AS

Philosophy of Religion: existence of God, evil and suffering, religious experience.

Buddhism: life of the Buddha, central concepts and practices, puja and meditation.

A2

Philosophy of Religion: miracles, science and religion, free will and determination, faith and reason.

Synoptic: issues of life, death and life after death.

How will I be Assessed?

AS: There are 2 examinations at the end of Year 12 worth 50% of A2.

A2: There are 2 examinations at the end of Year 13 worth 50% of A2. The Synoptic module is an extended answer prepared in advance in line with pre-examination guidance.

AS modules can be re-taken once if required.

Career Opportunity and Progression

There are many University courses such as Religion, Philosophy, Psychology and there are careers in Social Work, Counselling, Retail Management. The subject is also the basis for Humanities courses in University. Graduates in Religious Studies can go onto careers in Journalism, Social Work, Psychotherapy, Publishing, Nursing, Librarianship, Stockbroking and Teaching.



Aberdare Community School

Strive, Believe, Achieve

Host School:	Aberdare Community School/Mountain Ash Comprehensive School
Subject Name:	Diploma in Sport
Level:	3 BTEC
Syllabus:	EDEXCEL
Duration of Course:	2 Years
Time:	16 hours per fortnight

Course Outline

There are 13 Units of which 8 are Core Units and 5 are Specific Units.
All assessed internally.
4 samples sent to external examiner.

Entry Requirements

GCSE PE Grade C or above or BTEC Sports Studies.

What will I Study?

Anatomy and Physiology
Assessing Risk in Sport
Fitness Training and Programming
Sports Coaching Sports Development
Fitness Testing for Sport
Practical Sport
Sports Nutrition
Exercise Health and Lifestyle
Instructing Physical Activity and Exercise
Sports Injuries
Rules, Regulations and Officiating in Sport.

How will I be Assessed?

12 Units assessed internally of which 2 units per year are externally moderated.
4 samples of pupils work for each unit. There are 8 in total.



Aberdare Community School

Strive, Believe, Achieve

Host School: Aberdare Community School
Subject Name: Leisure and Tourism
Level: Level 2 GCSE
Syllabus: WJEC
Duration of Course: 1 Year
Time: 6 hours per fortnight

We will be looking at the impact leisure and tourism has in a range of different locations around the World. This is a suitable course to choose if you are interested in working in the leisure and tourism industry. The GCSE is assessed by examinations and controlled assessments.

Unit 1	Leisure and Tourism Choices
What does leisure and tourism mean?	We will investigate what leisure and tourism actually means and the difference between them.
What makes up the leisure industry?	We will look at sport and physical recreation, arts and entertainment, countryside recreation, home-based leisure, children's play activities, attractions and Catering.
What makes up the tourism industry?	We will look at travel agents, tour operators, tourist information, on-line travel services like Expedia and Trip Advisor, accommodation and catering.
Where does leisure and tourism take place?	We will look at a massive range of places where leisure and tourism takes place including leisure centres, sports venues, National Parks, theme parks, coastlines etc.
How does leisure and tourism meet the needs of different people?	We will look at the vast range of people who take part in leisure and tourism and the jobs that they create.

Unit 2	Leisure and Tourism Destinations
Why do people travel?	We will investigate how far people are prepared to travel to get to their choice of leisure or tourist activity.
How do they get there?	We will look at the massive range of options available for getting to a destination and consider the impacts they have.
Where do people go?	We will investigate the types of tourist destinations and consider the reason why people want to go there.
Country Case Studies	We will look at a range of places in our studies. Some of the places will include the Brecon Beacons, Cardiff Bay, Tenby, Barcelona and New York City. We will also look at tourism in Costa Rica.



Aberdare Community School

Strive, Believe, Achieve

Welsh Bacallaureate (WB)

All Year 12 pupils will be study the Welsh Bacallaureate course during their 6th form Studies at Aberdare Community School. The new revised and more rigorous Welsh Bacallaureate is based on a Skills Challenge Certificate and Supporting Qualifications and has been designed and ratified by the Welsh Assembly Government and the WJEC. The primary aim is to promote essential skills for employment and to provide opportunities through three Challenges and an Individual Project.

Department Details:

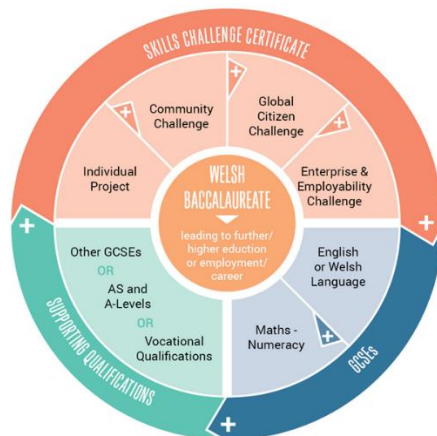
Leader of Learning: Mrs C Smith

Assistant Head Teacher (WBQ and CoPE) Mr C Lovell

Length of Course: 2 Years

Course Components

The Welsh Bacallaureate is a Level 3 qualification and will therefore be allocated the same curriculum timetabling hours as an A Level. Pupils can obtain the Skills Challenge Certificate at L3 and with completion of the required curriculum qualifications can also obtain the full Welsh Bacallaureate qualification.



The department staff are currently working hard to ensure that the Welsh Bacallaureate course offered by Aberdare Community School offers pupils an enriched and varied course which will lead to giving our pupils the best chances at either further or higher education or for future employment.

There are four components to the new Welsh Bacallaureate;

Community Challenge, Global Citizen Challenge, Enterprise and Employability Challenge and the Individual Project. Department staff are already involved in the Welsh Assembly's resource development groups ensuring that we are at the fore

front of developments for this new course and can offer our pupils the very best experience of the course. We have already secured partnerships for the Community Challenge with organisations such as Cardiff City FC, the WRU and the Blues and with Universities such as Cardiff and Aberystwyth and the Museum of Wales.

How does the course work?

There are a prescribed amount of hours for each component. Pupils attend lessons for the teaching and learning programme. These lessons will cover the Essential and Employability skills required for the Skills Challenge Certificate, such as critical thinking and problem solving or creativity and innovation. At the end of the teaching and learning programme pupils will sit a “challenge” (much like a controlled assessment). Each pupil will be individually graded for each challenge.

Individual Project

This is a project which may be a written (essay) style project or an artefact with supporting written evidence. The topic is the choice of each individual pupil. At Aberdare Community School we have identified WB Link teachers in each department who will work with pupils to assist them in formulating their project brief and will ensure a high level of subject specialism. Therefore pupils can work on a topic which is relevant to their interests, or plans for further education and or employment. These projects form almost mini dissertations and will be taken to university or job interviews alongside a C.V.

Qualifications

If a pupil passes all four of the components they will receive the Skills Challenge Certificate. This is a stand alone qualification which is a L3 equivalent.

Should pupils then pass their A-Levels (and have C grades or above in the Numeracy and Literacy GCSE's or equivalents) then they will also achieve the Welsh Baccalaureate qualification. This qualification has been ratified by the Russell Group Universities and will be accepted by UCAS as an A Level equivalent qualification.

At Advanced level, pupils will be expected to take on a greater level of independent study, in particular with regards to the Individual Project.

This is a new course which will become the performance measure for schools in Wales. Some aspects of the course are still awaiting final ratification by the Welsh Assembly Government. We will update parents and pupils as soon as further information is received by the school.

Component	Skills	Topics	Weighting
Community Challenge	Planning and Organisation • Personal Effectiveness	In completing the Community Challenge learners will be able to recognise the contributions they can make towards improving the chosen community and the benefits this will have for themselves, for others and for the environment	15%
Global Citizenship	Literacy • Critical Thinking and Problem Solving • Creativity and Innovation	The Global Citizenship Challenge will provide learners with the opportunity to build knowledge and understanding of complex and multifaceted global issues from six themes: Health, Food and Shelter, Population, Transportation, Economy and Natural Environment	15%
Enterprise and Employability	Numeracy • Digital Literacy • Creativity and Innovation • Personal Effectiveness	The Enterprise and Employability Challenge provides learners with an opportunity to develop important team working skills	20%
Individual Project	Literacy • Numeracy • Digital Literacy • Planning and Organisation • Critical Thinking and Problem Solving	The purpose of the Individual Project is to develop learners' skills, through carrying out a research activity with an emphasis on future educational or career aspirations	50%



Aberdare Community School

Strive, Believe, Achieve

Post Sixteen Pupil Admission Protocol

Pupil success in post sixteen education is due to the breadth of provision available, providing learners with sufficient time, support and flexibility to fulfil their learning potential. Progression to further education is maximised through an effective core programme, main qualifications, community learner industry focus (CLIF) and work experience. Pupils' ability, aptitude and individual needs will be considered in formulating effective programmes of study in line with WAG post 16 planning framework. Schools within the CVC will work with other partner schools and a wide range of community, academic and workplace-based organisations to provide a balanced programme with suitable outcomes for individual learners promoting inclusion in post sixteen education.

Key Elements

- Ensure the right pupils are able to access the right programmes within the CVC and thereby maximise their outcomes.
- Ensure quality assurance mechanisms are in place in relation to, programme allocation, delivery and suitability of pupils for the programmes set.
- Provide quality educational experiences and outcomes for all learners
- Optimise use of resources reducing unnecessary duplication of provision within the consortium while maintaining enough flexibility to react to learner needs.
- Maintain cost-effectiveness and efficiency of programmes.
- Develop a sustainable provision.

Post 16 Summary Guidelines (further details are available from specific CVC documentation)

1. Programme provision provides L3 (AS/A2 and Vocational) and L2 provision to meet the needs of all learners.
2. A maximum of 25 pupils will be allowed on all L3 courses.
3. Year 11 pupils will be interviewed and provisionally assigned to suitable post sixteen programmes of study in the Easter term of year 11, this will be a provisional offer based on predicted grades and current performance as judged by progress leaders in the base school.
4. Confirmed offer on pupils chosen programme will be secured based on final GCSE results, late submissions to programmes will be allocated on a capacity basis, pupils' aptitude for the subject and final grades.
5. A provisional programme offer will be given to pupils as part of the post 16 options process, parents and pupils will be informed of the programme offer and the necessary entry requirements.
6. All programmes of study at post 16 will require pupils to have achieved L2 in English and Mathematics or make a commitment to attend GCSE resit lessons as part of the CLIF element of the programme of study. Any pupil continuing L3 / A2 courses in year 13 must have achieved a L2 in Mathematics and English prior to year 13.
7. Each programme of study will adhere to minimum entry requirements specific to each course. Entry requirements will be set according to standards agreed by all parties delivering the subject within the consortium.
8. Any pupil accessing a pure science A level should have achieved at least a B grade at GCSE.

9. CVC reserves the right to review a place on any programme of study for pupils' with poor attendance and attitude during Key Stage 4.
10. All pupils following post 16 courses are expected to maintain high attendance and fully engage in their learning. Pupils failing to commit fully to their programme of study will have their programme of study reviewed.
11. All pupils will commit to follow the four programme components as outlined in WAG advice for post sixteen planning.
12. Specific issues arising in relation to individual pupils circumstances will be reviewed by CVC lead personnel.

Further detailed guidance can be obtained from specific CVC support documentation.

March 30th Y12 Option Choices 2015-16

Codes : ACS = Aberdare Community School, MACs= Mountain Ash Comprehensive, SJB = St John Baptist School

Option A	Option B	Option C	Option D	Option E
Art (Fine) MACS	Art (Fine) SJB	Biology ACS / MACS	Biology SJB	Art ACS
Business Studies Applied ACS	Biology ACS	Business Studies ACS / MACS	Computing SJB	Biology SJB
Chemistry SJB	Business Studies Applied SJB	DT ACS	Geography ACS / MACS	Chemistry ACS
Construction L2 – 1 year MACS	Chemistry SJB	English Language/Literature ACS	History SJB	French ACS / MACS
DT SJB	English Literature MACS	English Literature ACS	Hospitality L3 ACS	Health & Social Care ACS
English Literature SJB	History SJB	English Literature SJB		Geography ACS
Engineering L2 ACS	IT BTEC (L3) ACS	History ACS / MACS		
Engineering L3 MACS	IT MACS	Mathematics SJB	Mathematics SJB	Physics SJB
History ACS	Performing Arts ACS / MACS	Mathematics (Further) SJB	Media Studies ACS	RS SJB
Geography SJB	RS ACS	Music SJB / MACS	PE SJB	Science Applied SJB
Mathematics ACS	Motor Vehicle (IMI Level 1) – 1 year MACS Pt 1 of 2	Music ACS	Science BTEC (L3) ACS / MACS	Public Services (L3) ACS
Music BTEC ACS / MACS		Physics ACS	Textiles ACS	RS ACS / MACS
Science Applied SJB		Welsh SJB	Welsh ACS	Sports Studies ACS / MACS Pt 2 of 2
Science BTEC (L3) ACS		Sports Studies ACS / MACS Pt 1 of 2	Motor Vehicle (IMI Level 1) – 1 year MACS Pt 2 of 2	Law ACS
Hair & Beauty (VTCT Level 1) – 1 year (MACs) Welsh Baccalaureate (WB) (2 years compulsory) Motor Vehicle (IMI Level 2) – 1 year				

March 30th Y13: Option Choices 2015-16

Option A	Option B	Option C	Option D	Option E
Biology ACS	Biology SJB	Art & Design MACS	Art & Design ACS	Biology MACS
Business Studies Applied SJB	Business Studies BTEC L3 ACS/MACS	Art & Design SJB	DT ACS	Business Studies Applied ACS
English Literature SJB	Computing SJB	Chemistry ACS	DT SJB	Chemistry SJB
French ACS/MACS	Engineering L2 ACS	Chemistry SJB	English Literature MACS	Child Development ACS
Geography ACS	Engineering L3 MACS	English Literature ACS	Geography SJB	History ACS
Mathematics SJB	English Lang/ Lit ACS	Geography ACS/MACS	Hospitality BTEC L2 ACS	History SJB
Mathematics (Further) SJB	History ACS/MACS	ICT BTEC L3 ACS	ICT MACS	Law SJB
Media Studies ACS	Mathematics SJB	Public Services Lev 3 ACS	Mathematics ACS	Leisure & Tourism L2 ACS
Performing Arts ACS/MACS	Music BTEC (Level 3) ACS/MACS	RS ACS/MACS	Music ACS	Music SJB
PE SJB	BTEC Science ACS/MACS	Welsh ACS	PE ACS	Physics ACS
Science Applied SJB	BTEC Science ACS	Motor Vehicle (IMI Level 2) (Pt 1 of 2) MACS	Physics SJB	Textiles ACS
Sports Studies (Pt 1 of 2) ACS/MACS	Law ACS		RS ACS	Motor Vehicle (IMI Level 2) (Pt 2 of 2) MACS
			RS SJB	
			Welsh SJB	
			Sports Studies (Pt 2 of 2) ACS/MACS	